

NOBU HOTEL

LOS CABOS



The 200-room property seamlessly blends contemporary Japanese minimalism with locally sourced natural, Mexican materials and finishes. Drawing design inspiration from the sophisticated palette that alludes to the Japanese aesthetic of the Nobu brand, as well as the unique elements of Cabo San Lucas, Nobu Hotel Los Cabos is the perfect fusion of architectural elegance and laid-back luxury.

ACCOMMODATIONS

- 200 guest rooms - 103 suites, 97 standard
- Bath tubs/soaking tubs and walk-in showers
- Exclusive Nobu beds with high thread count and organic cotton linens
- 65" TV
- Nespresso machine and traditional Japanese tea set
- Double vanities with Italian stone finish
- Private balcony with comfortable lounge furniture
- Locally sourced artwork
- Minibar*
- Garment steamers available
- VIP check-in experience
- Nightly turn-down service
- Butlers (in select suites)
- In-room dining from Nobu Restaurant, Pacific Restaurant and Malibu Farm*
- Shoe-shine and laundry service*
- In-room yoga mats
- Natura Bissé signature bathroom amenities
- International calls to US, Canada, and Mexico

ROOM CATEGORIES

- 97 Deluxe Rooms: hotel view, desert view, garden view, ocean view, swim-up pool view, swim-up garden view and private pool
- 41 Junior Suites: hotel view, desert view, garden view, ocean view, and swim-up ocean front
- 3 Zen Suites: 1 bedroom with golf view or ocean view
- 2 Sake Suite: 1 bedroom with ocean view
- 3 Miyabi Suite: 1 bedroom with ocean view
- 1 Nobu Suite: 1 and 2 bedroom ocean front

LOCATION

Los Cabos International Airport - 40 min drive
Diamante Golf Complex - 5 min drive
Cabo San Lucas Marina - 26 min drive

*Fees may apply

MEETING & EVENTS

- 14,389 square feet of meeting and event space
- 2 ballrooms including the 4,650 sq. ft. Tsuki ballroom, 1 boardroom, one pre-function space, 1 outdoor terrace and 2 outdoor lawns
- Banquet menus featuring select dishes from Nobu Restaurant and Malibu Farm

AMENITIES

- 4 pools including an adults-only pool
- Private swim-up cabanas, private beach cabanas, 4 super cabanas equipped with a full bathroom, day bed, living area, and tv
- Kids Club
- Culinary garden
- Retail Spaces
- Two world-class golf courses nearby designed by Davis Love III and Tiger Woods as part of the Diamante Cabo San Lucas Complex

DINING

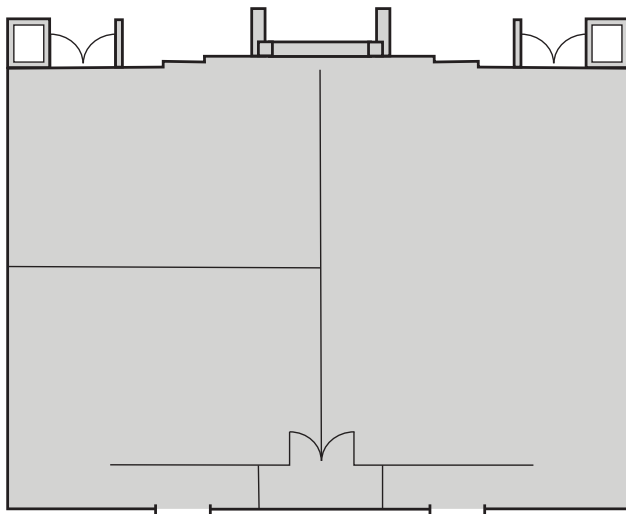
- Nobu Restaurant
- Malibu Farm
- Nobu Cafe
- Pacific Restaurant
- Ardea Steakhouse
- Cortez Swim-up Bar
- Playabar
- 6 bars: 2 at Nobu Restaurant, 1 in Malibu Farm, Pacific Restaurant, Playabar, and Cortez Swim-up Bar.

WELLNESS

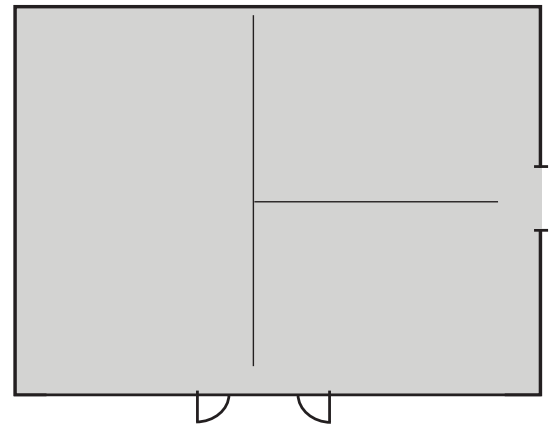
- 13,691 square feet of spa
- 13 treatment rooms
- Salon services
- Indoor hydrotherapy areas
- Outdoor hydrotherapy garden - co-ed lounge inside and outside - water circuit, experiential shower, cabana jacuzzi, outdoor shower, steam and sauna areas
- 3,723 square feet Fitness facility - featuring full service gym equipment, and an indoor/outdoor yoga/spinning area.

MEETING SPACE ROOM CAPACITY

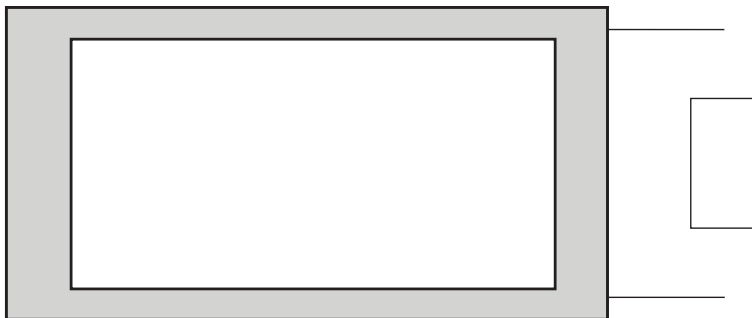
ROOM NAME	L (Mts)	L (Ft)	W (Mts)	W (Ft)	Ceiling Height (Ft)	Ceiling Height (Mts)	Actual Sq. Ft.	M²	Ushape	Theater	Imperial	Banquet	Cocktail	Classroom
Tsuki	16.70	54.77	26.3	86.26	18.7	5.7	4,724	434	N/A	480	N/A	330	480	360
Tsuki 1	16.70	54.77	12.9	42.31	18.7	5.7	2,317	215	56	200	60	140	280	144
Tsuki 2	8.4	27.55	12.9	42.31	18.7	5.7	1,165	108	40	145	48	95	100	72
Tsuki 3	8.2	26.89	12.9	42.31	18.7	5.7	1,137	106	40	140	48	95	100	70
Tsuki Pre-function	6.70	21.986	23.36	76.64	11.28	3.44	1,684.5	N/A	N/A	N/A	N/A	N/A	100	N/A
Tsuki Terrace	5	16.404	23.36	76.64	N/A	N/A	1,257.2	N/A	N/A	N/A	N/A	N/A	100	N/A
Aozora	15.83	51.92	11.85	38.86	15.09	4.5	2,017	187.5	57	220	57	120	300	120
Aozora 1	5.8	19.02	8.41	27.58	15.09	4.5	525	48.77	15	42	15	40	80	32
Aozora 2	5.8	19.02	8.41	27.58	15.09	4.5	525	48.77	15	42	15	40	80	32
Aozora 3	15.83	51.92	7.36	24.14	15.09	4.5	1,253	116.5	30	156	30	100	140	64
Shiawase	40.89	134.15	16	52.49	N/A	N/A	7,041.53	654	N/A	N/A	N/A	450	700	N/A
Umi	N/A	N/A	N/A	N/A	N/A	N/A	5,381.96	500	N/A	N/A	N/A	350	500	N/A
Boardroom	19	5.70	50	15.24	N/A	N/A	800	73.35	14	N/A	N/A	N/A	N/A	N/A
Yakusoku Garden	5.35	17.55	3.57	11.71	9.64	2.94	205.51	19.09	N/A	N/A	N/A	20	30	N/A



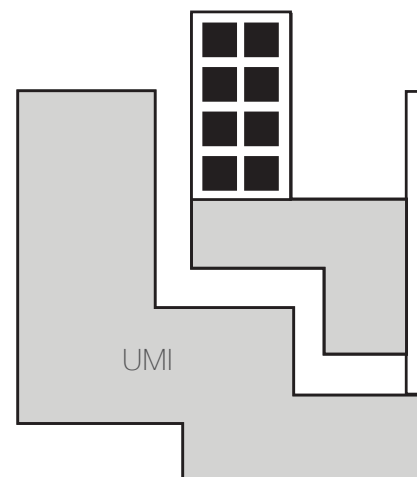
TSUKI
4,724 sq ft / 434 sq mts



AOZORA
2,017 sq ft / 187.5 sq mts



SHIAWASE
7,041.53 sq ft / 654 sq mts



UMI